



*Home Appliances
Components*

NINGBO ETDZ HUIXING TRADE CO., LTD.

Add:10F, Dept.7, ShanShan Plaza, No.777 RiLi Road, Ningbo 315100,China

Tel: +86-574-87161687 , 87127509

Fax:+86-574-87149207, 87161698

E-mail: linlibing@huixingtrade.com

<http://www.huixingtrade.com>

<http://huixing.en.alibaba.com>

NINGBO ETDZ HUIXING TRADE CO., LTD.

MEMO

XD-001

 220V/110V 50W-220W
 0.6A-1.85A / 1.2A-3.7A
 5μF-15μF/20μF-55μF

XD-002

 220V/110V 50W-220W
 0.6A-1.85A / 1.2A-3.7A
 5μF-15μF/20μF-55μF

XD-003

 220V/110V 50W-220W
 0.6A-1.85A / 1.2A-3.7A
 5μF-15μF/20μF-55μF

XD-004

 220V/110V 50W-220W
 0.6A-1.85A / 1.2A-3.7A
 5μF-15μF/20μF-55μF

XD-005

 220V/110V 50W-220W
 0.6A-1.85A / 1.2A-3.7A
 5μF-15μF/20μF-55μF

XD-006

 220V/110V 50W-220W
 0.6A-1.85A / 1.2A-3.7A
 5μF-15μF/20μF-55μF

XD-007

 220V/110V 50W-220W
 0.6A-1.85A / 1.2A-3.7A
 5μF-15μF/20μF-55μF

XD-008

 220V/110V 50W-220W
 0.6A-1.85A / 1.2A-3.7A
 5μF-15μF/20μF-55μF

XD-009

 220V/110V 50W-220W
 0.6A-1.85A / 1.2A-3.7A
 5μF-15μF/20μF-55μF

XD-010

 220V/110V 50W-220W
 0.6A-1.85A / 1.2A-3.7A
 5μF-15μF/20μF-55μF

XD-011

 220V/110V 50W-220W
 0.6A-1.85A / 1.2A-3.7A
 5μF-15μF/20μF-55μF

XD-012

 220V/110V 50W-220W
 0.6A-1.85A / 1.2A-3.7A
 5μF-15μF/20μF-55μF

Washing Motor

Rated Voltage	220V,230V,240V,220~240V
Rated Frequency	50Hz 60Hz 50/60 Hz
Rated Power	50W 80W 100W 120W 135W 150W 160W 180W 220W
Rated Current	0.6 0.85 1.00 1.15 1.30 1.40 1.45 1.65 1.85
Capacitor	5Uf 7uF 8.5uF 9uF 10uF 11uF 12uF 13uF 15uF

Rated Voltage	110V,127V
Rated Frequency	50Hz 60Hz 50/60 Hz
Rated Power	50W 80W 100W 120W 135W 150W 160W 180W 220W
Rated Current	1.20 1.65 1.90 2.15 2.45 2.80 2.90 3.25 3.70
Capacitor	20Uf 28uF 32uF 35uF 40uF 42uF 45uF 48uF 55uF

Insulation grade	Class E
Number of poles	4P, 6P
Character of service	S1
Noise	<50dB
Ambient temperature	-15~40°C
Altitude	<1000m

YYG-001

 220V/110V 25W-90W
 0.46A-0.92A / 0.92A-1.95A
 3μF-7μF/10μF-28μF

YYG-002

 220V/110V 25W-90W
 0.46A-0.92A / 0.92A-1.95A
 3μF-7μF/10μF-28μF

YYG-003

 220V/110V 25W-90W
 0.46A-0.92A / 0.92A-1.95A
 3μF-7μF/10μF-28μF

YYG-004

 220V/110V 25W-90W
 0.46A-0.92A / 0.92A-1.95A
 3μF-7μF/10μF-28μF

YYG-005

 220V/110V 25W-90W
 0.46A-0.92A / 0.92A-1.95A
 3μF-7μF/10μF-28μF

YYG-006

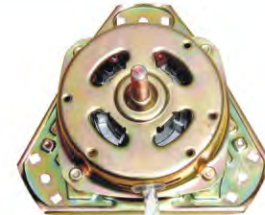
 220V/110V 25W-90W
 0.46A-0.92A / 0.92A-1.95A
 3μF-7μF/10μF-28μF

YYG-007

 220V/110V 25W-90W
 0.46A-0.92A / 0.92A-1.95A
 3μF-7μF/10μF-28μF

YYG-008

 220V/110V 25W-90W
 0.46A-0.92A / 0.92A-1.95A
 3μF-7μF/10μF-28μF

YYG-009

 220V/110V 25W-90W
 0.46A-0.92A / 0.92A-1.95A
 3μF-7μF/10μF-28μF

YYG-010

 220V/110V 25W-90W
 0.46A-0.92A / 0.92A-1.95A
 3μF-7μF/10μF-28μF

YYG-011

 220V/110V 25W-90W
 0.46A-0.92A / 0.92A-1.95A
 3μF-7μF/10μF-28μF

YYG-012

 220V/110V 25W-90W
 0.46A-0.92A / 0.92A-1.95A
 3μF-7μF/10μF-28μF

Spinning Motor

Rated Voltage	220V,230V,240V,220~240V
Rated Frequency	50Hz 60Hz 50/60 Hz
Rated Power	25W 30W 45W 60W 70W 80W 90W
Rated Current	0.46 0.56 0.68 0.75 0.80 0.88 0.92
Capacitor	3Uf 3.5uF 4uF 5uF 6uF 6.5uF 7uF

Rated Voltage	110V,127V
Rated Frequency	50Hz 60Hz 50/60 Hz
Rated Power	25W 30W 45W 60W 70W 80W 90W
Rated Current	0.92 1.00 1.30 1.45 1.55 1.70 1.95
Capacitor	10Uf 12uF 14uF 18uF 18uF 24uF 28uF

Insulation grade	Class E, Class B
Number of poles	4P, 6P
Character of service	S2/15min
Noise	≤50dB
Ambient temperature	-15~40°C
Altitude	≤1000m

DXT5-24



Spin Timer 5min AC 220V 3A 50Hz
Temp,-10°C-55°C Torque:≤0.638Nm
Use Life:10000 Times

DXT5-73



Spin Timer 5min AC 220V 3A 50Hz
Temp,-10°C-55°C Torque:≤0.638Nm
Use Life:10000 Times

DXT5-13



Spin Timer 5min AC 220V 3A 50Hz
Temp,-10°C-55°C Torque:≤0.638Nm
Use Life:10000 Times

DXT15-29



Wash Timer 15min AC 220V 3A 50Hz
Temp,-10°C-55°C Torque:≤0.638Nm
Use Life:10000 Times

DXT15-53



Wash Timer 15min AC 220V 3A 50Hz
Temp,-10°C-55°C Torque:≤0.638Nm
Use Life:10000 Times

DXT15-62



Wash Timer 15min AC 220V 3A 50Hz
Temp,-10°C-55°C Torque:≤0.638Nm
Use Life:10000 Times

DXT5-64



Spin Timer 5min AC 220V 3A 50Hz
Temp,-10°C-55°C Torque:≤0.638Nm
Use Life:10000 Times

DXT5-B-3



Spin Timer 5min AC 220V 3A 50Hz
Temp,-10°C-55°C Torque:≤0.638Nm
Use Life:10000 Times

DXT15-B-5



Spin Timer 5min AC 220V 3A 50Hz
Temp,-10°C-55°C Torque:≤0.638Nm
Use Life:10000 Times

DXT15S-14



Wash Timer 15min AC 220V 3A 50Hz
Temp,-10°C-55°C Torque:≤0.638Nm
Use Life:10000 Times

DXT15DF-II-1



Wash Timer 15min AC 220V 3A 50Hz
Temp,-10°C-55°C Torque:≤0.638Nm
Use Life:10000 Times

DXT15-FB



Spin Timer 5min AC 220V 3A 50Hz
Temp,-10°C-55°C Torque:≤0.638Nm
Use Life:10000 Times

DXT45SF-Q3



Spin Timer 5min AC 220V 3A 50Hz
Temp,-10°C-55°C Torque:≤0.883Nm
Use Life:10000 Times

DXT15DF-II-1



Timer Switch AC 220V 3A 50Hz
Temp,-10°C-55°C Torque:≤0.883Nm
Use Life:10000 Times

DXT15S-14-6



Wash Timer 15min AC 220V 3A 50Hz
Temp,-10°C-55°C Torque:≤0.638Nm
Use Life:10000 Times

DXT15DF-II-2



Wash Timer 15min AC 220V 3A 50Hz
Temp,-10°C-55°C Torque:≤0.638Nm
Use Life:10000 Times

DXT15DF-II-2



Timer Switch AC 220V 3A 50Hz
Temp,-10°C-55°C Torque:≤0.883Nm
Use Life:10000 Times

DXT15DF-II-3



Timer Switch AC 220V 3A 50Hz
Temp,-10°C-55°C Torque:≤0.883Nm
Use Life:10000 Times

DXT35/45



Soak Timer 35/45min AC 220V 3A 50Hz
Temp,-10°C-55°C Torque:≤0.883Nm
Use Life:10000 Times

DXT35/45-Q3



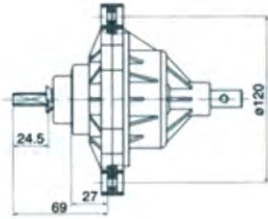
Soak Timer 35/45min AC 220V 3A 50Hz
Temp,-10°C-55°C Torque:≤0.883Nm
Use Life:10000 Times

DXT15DF-II-3



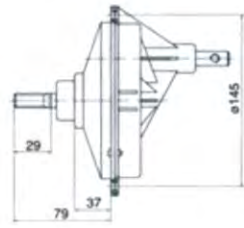
Wash Timer 15min AC 220V 3A 50Hz
Temp,-10°C-55°C Torque:≤0.638Nm
Use Life:10000 Times

GN-2W0626



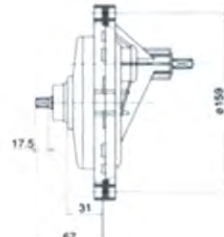
Reduction Ratio :
1:3.67/4/4.28/5.2
Wheel shaft
Parameter:9Φ12
Suitable washing
capacity:3.0kg

GN-404



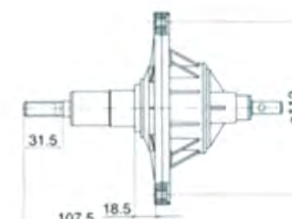
Reduction Ratio :
1:3.67/4/4.28/5.2
Wheel shaft
Parameter:11Zx1mx45R
Suitable washing
capacity:4.0-5.0kg

HT



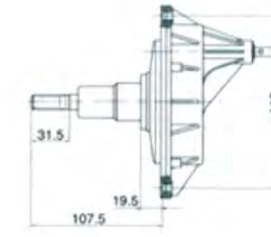
Reduction Ratio :
1:3.67/4/4.28/5.2
Wheel shaft
Parameter:11Zx1mx45R
Suitable washing
capacity:4.0-5.0kg

XPB45-823S



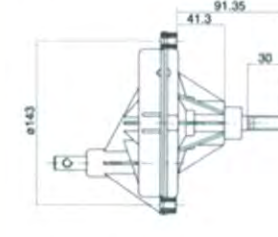
Reduction Ratio :
1:3.67/4/4.28/5.2
Wheel shaft
Parameter:11Zx1mx30R
Suitable washing
capacity:4.5kg

XPB45-823S-1



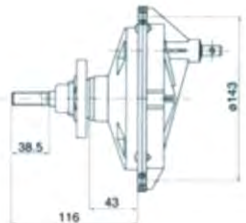
Reduction Ratio :
1:3.67/4/4.28/5.2
Wheel shaft
Parameter:11Zx1mx30R
Suitable washing
capacity:4.5kg

XPB50-121S



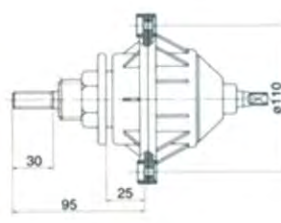
Reduction Ratio :
1:3.67/4/4.28/5.2
Wheel shaft
Parameter:11Zx1mx20R
Suitable washing
capacity:5.0kg

XPB35-10S



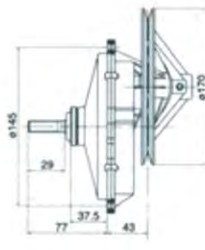
Reduction Ratio :
1:3.67/4/4.28/5.2
Wheel shaft
Parameter:11Zx1mx45R
Suitable washing
capacity:3.5-4.5kg

XPB40-33S



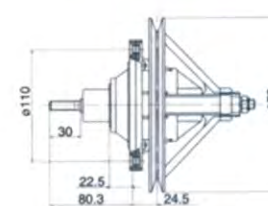
Reduction Ratio :
1:3.67/4/4.28/5.2
Wheel shaft
Parameter:11Zx1mx45R
Suitable washing
capacity:4.0-5.0kg

XPB45-505S



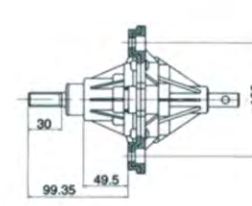
Reduction Ratio :
1:3.67/4/4.28/5.2
Wheel shaft
Parameter:11Zx1mx30R
Suitable washing
capacity:4.0-5.0kg

XPB50-15S



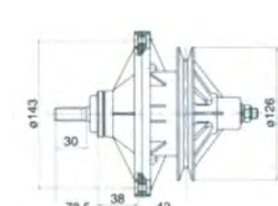
Reduction Ratio :
1:3.67/4/4.28/5.2
Wheel shaft
Parameter:9XVΦ11.5
Suitable washing
capacity:5.0-5.5kg

XPB50-188S



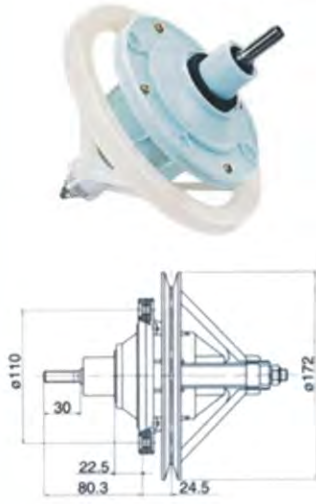
Reduction Ratio :
1:3.67/4/4.28/5.2
Wheel shaft
Parameter:11Zx1mx20R
Suitable washing
capacity:5.0kg

XPB50-368S



Reduction Ratio :
1:3.67/4/4.28/5.2
Wheel shaft
Parameter:11Zx1mx30R
Suitable washing
capacity:5.0-6.0kg

XPB50-6S



Reduction Ratio :
1:3.67/4/4.28/5.2
Wheel shaft
Parameter:10Zx1mX45R
Suitable washing
capacity:5.0kg

XPB52-99S



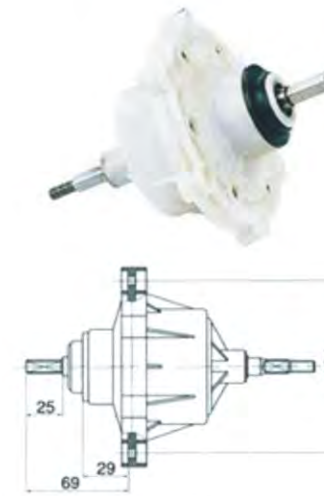
Reduction Ratio :
1:3.67/4/4.28/5.2
Wheel shaft
Parameter:10Zx1mX45R
Suitable washing
capacity:5.0kg

XPB52-99S-1



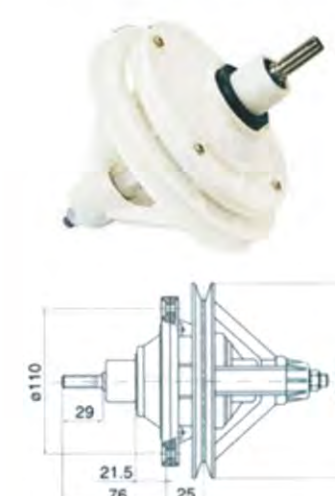
Reduction Ratio :
1:3.67/4/4.28/5.2
Wheel shaft
Parameter:10Zx1mX30R
Suitable washing
capacity:5.0-5.2kg

XPB60-838S



Reduction Ratio :
1:3.67/4/4.28/5.2
Wheel shaft
Parameter:9Φ12
Suitable washing
capacity:3.0

XPB60-98S



Reduction Ratio :
1:3.67/4/4.28/5.2
Wheel shaft
Parameter:10Zx1mX30R
Suitable washing
capacity:6.0-7.0kg

MWM501&301



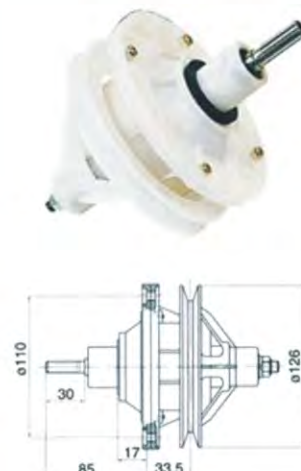
Reduction Ratio :
1:3.67/4/4.28/5.2
Wheel shaft
Parameter:11Φ12.3
Suitable washing
capacity:2.5-3.0kg

XPB55-8S



Reduction Ratio :
1:3.67/4/4.28/5.2
Wheel shaft
Parameter:11Zx1mX30R
Suitable washing
capacity:5.5-6.5kg

XPB60-2000S



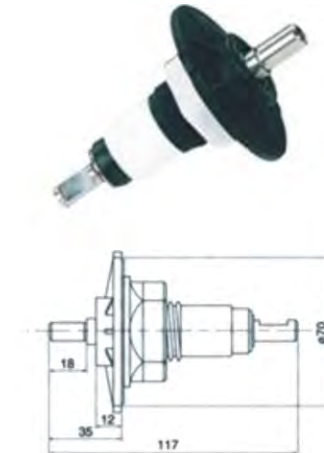
Reduction Ratio :
1:3.67/4/4.28/5.2
Wheel shaft
Parameter:11Zx1mX30R
Suitable washing
capacity:5.05-6.5kg

XPB60-681S



Reduction Ratio :
1:3.67/4/4.28/5.2
Wheel shaft
Parameter:10Zx1mX45R
Suitable washing
capacity:5.5-6.5kg

J-E



Reduction Ratio :
1:3.67/4/4.28/5.2
Wheel shaft
Parameter:9Φ11
Suitable washing
capacity:2.5-3.0kg

J-F



Reduction Ratio :
1:3.67/4/4.28/5.2
Wheel shaft
Parameter:8Φ10
Suitable washing
capacity:2.5-3.0kg

J-C



Reduction Ratio :
1:3.67/4/4.28/5.2
Wheel shaft
Parameter:8.6Φ9.7
Suitable washing
capacity:2.5-3.0kg

FC002



Size: Φ43

FC003



Size: Φ42

FC004



Size: Φ38

FC014



Size: Φ36

FC015



Size: Φ43

FC016



Size: Φ35

FC005



Size: Φ37

FC006



Size: Φ31

FC007



Size: Φ33

FC017



Size: Φ41

FC018



Size: Φ35

FC019



Size: Φ35

FC008



Size: Φ40

FC009



Size: Φ36

FC010



Size: Φ36

FC020



Size: Φ43

FC021



Size: Φ46

FC022



Size: Φ38

FC011



Size: Φ46

FC012



Size: Φ34

FC013



Size: Φ38

FC023



Size: Φ35

FC024



Size: Φ40

FC025



Size: Φ43

JC1006



Size: $\Phi 10$ $\Phi 12$

JC1036



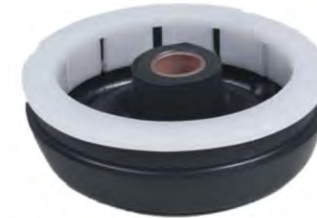
Size: $\Phi 14$

JC1011



Size: $\Phi 14$

JC1006



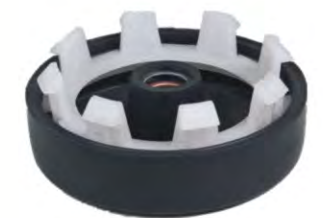
Size: $\Phi 14$ $\Phi 16$

JC1049



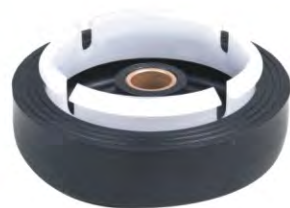
Size: $\Phi 14$

JC1034



Size: $\Phi 12$ $\Phi 14$

JC1046



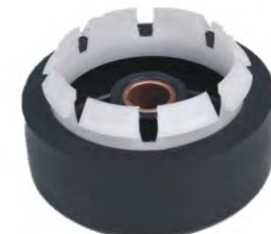
Size: $\Phi 10$ $\Phi 12$

JC1037



Size: $\Phi 14$

JC1010



Size: $\Phi 10$ $\Phi 12$

JC1021



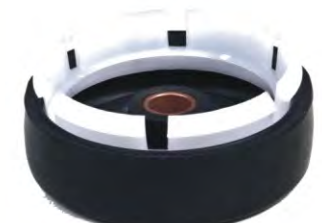
Size: $\Phi 12$ $\Phi 14$

JC1022



Size: $\Phi 12$ $\Phi 14$

JC1023



Size: $\Phi 12$ $\Phi 14$ $\Phi 16$

HXWS-1



Material: Rubber Size: Φ38
Customization Available

HXWS-2



Material: Rubber Size: Φ28
Customization Available

HXWS-3



Material: Rubber Size: Φ35
Customization Available

HXWS-4



Material: Rubber Size: Φ30
Customization Available

HXWS-5



Material: Rubber Size: Φ35
Customization Available

HXWS-6



Material: Rubber Size: Φ20
Customization Available

HXWS-7



Material: Rubber Size: Φ20
Customization Available

HXWS-8



Material: Rubber Size: Φ20
Customization Available

HXWS-9



Material: Rubber Size: Φ20
Customization Available

HXWS-10



Material: Rubber Size: Φ18
Customization Available

HXWS-11



Material: Rubber Size: Φ19
Customization Available

HXWS-12



Material: Rubber Size: Φ22
Customization Available

HXWF-1



Washing Machine Flange Material: Steel
Shaft 14mm Various Size Available
Customization Available

HXWF-2



Washing Machine Flange
Shaft 14mm Various Size Available
Customization Available

HXWF-3



Washing Machine Flange
Shaft 14mm Various Size Available
Customization Available

HXWF-4



Washing Machine Flange
Shaft 14mm Various Size Available
Customization Available

HXWP-1



Washing Machine Pulley
Assemble hole 70mm
Various Size Available
Customization Available

HXWP-2



Washing Machine Pulley
Assemble hole 63mm
Various Size Available
Customization Available

HXWP-3



Washing Machine Pulley
Assemble hole 50mm
Various Size Available
Customization Available

HXWP-4



Washing Machine Pulley
Assemble hole 50mm
Various Size Available
Customization Available

HXWP-5



Axis
Assemble hole 60mm
Various Size Available
Customization Available

HXWP-6



Axis
Assemble hole 50mm
Various Size Available
Customization Available

HXWP-7



Axis
Assemble hole 60mm
Various Size Available
Customization Available

HXWP-8



Washing Machine Pulley
Assemble hole 136mm
Various Size Available
Customization Available

HXWH-1



Various Size Available
Customization Available

HXWH-2



Various Size Available
Customization Available

HXWH-3



Various Size Available
Customization Available

HXWH-4



Various Size Available
Customization Available

HXWH-5



Various Size Available
Customization Available

HXWH-6



Various Size Available
Customization Available

Suspender



Various Size Available
Customization Available

Spin Tub



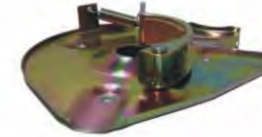
Various Size Available
Customization Available

Top-Loading Tub



Various Size Available
Customization Available

Brake Plate



Various Size Available
Customization Available

Brake Plate



Various Size Available
Customization Available

Snap Rings



Various Size Available
Customization Available

HXYC01



Plastic Pulsator
Various Size Available
Customization Available

HXYC02



Plastic Pulsator
Various Size Available
Customization Available

HXYC03



Plastic Pulsator
Various Size Available
Customization Available

Cover Spring



Various Size Available
Customization Available

Motor Spring



Various Size Available
Customization Available

Spring



Various Size Available
Customization Available

HXYC04



Plastic Pulsator
Various Size Available
Customization Available

HXYC05



Plastic Pulsator
Various Size Available
Customization Available

HXYC06



Plastic Pulsator
Various Size Available
Customization Available

Pulling Cable



Various Size Available
Customization Available

Drain/ Brake String



Various Size Available
Customization Available

Micro Switch



Various Size Available
Customization Available

Plastic Stand



Various Size Available
Customization Available

Series of Scattered Fittings



Various Size Available
Customization Available

T-Branch Pipe



Various Size Available
Customization Available

Filter



Various Size Available
Customization Available

Filter



Various Size Available
Customization Available

Glass



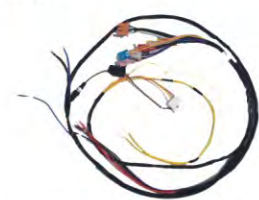
Various Size Available
Customization Available

HXW-1



Wires
Length:1200mm
Various Length available

HXW-2



Wires
Length:1200mm
Various Length available

Pipes



Connection Pipes Various Size Available
Customization Available

Inlet Hose



Connection Pipes EVA L:1200mm
Various Size Available
Customization Available

Inlet Hose



Connection Pipes EVA L:1470mm
Various Size Available
Customization Available

Outlet Hose



Connection Pipes EVA L:1200mm
Various Size Available
Customization Available

O Series

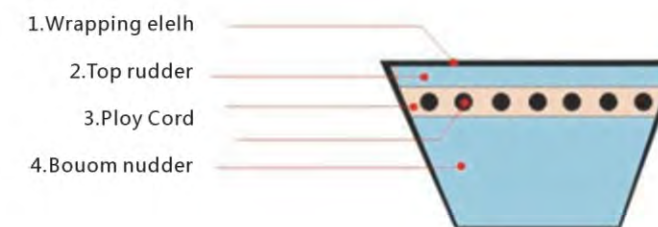
Model & Specification	
O-380	O-615
O-442	O-620
O-450	O-625
O-455	O-630
O-460	O-640
O-462	O-645
O-470	O-655
O-474	O-660
O-480	O-670
O-489	O-675
O-495	O-685
O-500	O-690
O-505	O-695
O-510	O-700
O-520	O-710
O-530	O-715
O-540	O-720
O-550	O-730
O-560	O-740
O-570	O-745
O-580	O-750
O-585	O-760
O-590	O-770
O-595	O-900
O-600	O-1400
O-610	

W10 H 6 A 40°

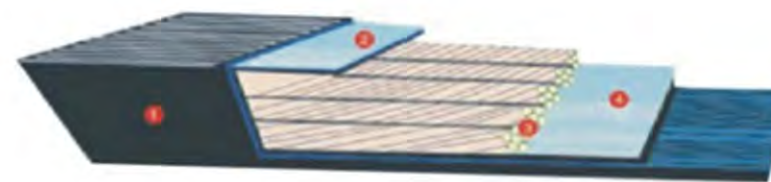
A Series

Model & Specification	
A-30	A-675
A-545	A-680
A-560	A-686
A-570	A-695
A-585	A-700
A-600	A-710
A-604	A-730
A-610	A-740
A-620	A-755
A-630	A-760
A-640	A-780
A-650	A-785
A-655	A-810
A-660	A-820
A-668	

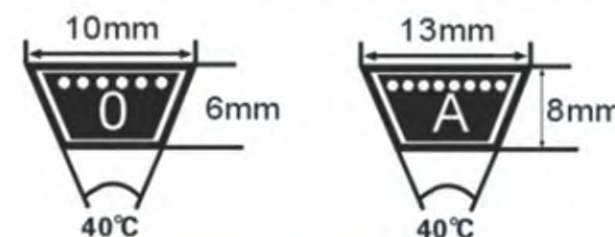
W13 H 8 A 40°

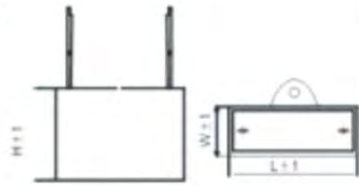


Belt Structure



Standard and size of kinds of V style Belts





Item	Capability
Rated voltage	100-500VAC
Scope of capacity	1-20UF
Warp of capacity	+5%~-5%
Sort of climate	40/60/21
Grade of safety	P0

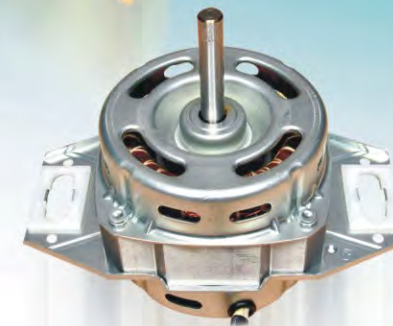


Item	Capability
Rated voltage	100-500VAC
Scope of capacity	1-60UF
Warp of capacity	+5%~-5%
Sort of climate	40/70/21
Grade of safety	P0



Rated voltage	250-300V(AC)			400-500V(AC)		
	L	W	H	L	W	H
1						
15		10	22		18	28
2						
25	37	16	25			
3					21-32	34-40
35						
4		18-20	28-30			
45					47-55	
5						
55	47-52					
6					27-32	40-47
7		20-25				
8						
9						
10					55-56	
12						
15						
16	52-55	27	38-42			
18						
20						

Rated voltage	250-300V(AC)		400-500V(AC)	
	D	H	D	H
2	25	40	22	55
2.5				
3		50		
3.5	30			
4				
5				
6				
7		60-70	34-42	
8				52-82
9				
10				
12	34-42			
15				
16		52-60		
20				
25				55-56
30			42-50	
35				
40				
50	42-50	88-110	45-55	120-150
60				
14+6	42	60	50	80
40+18	50	110	55	120



http://www.huixingtrade.com

http://www.huixingtrade.com

XQD-001

 220V/110V 50W-220W
 0.6A-1.85A / 1.2A-3.7A
 5μF-15μF/20μF-55μF

XQD-002

 220V/110V 50W-220W
 0.6A-1.85A / 1.2A-3.7A
 5μF-15μF/20μF-55μF

XQD-003

 220V/110V 50W-220W
 0.6A-1.85A / 1.2A-3.7A
 5μF-15μF/20μF-55μF

XQD-004

 220V/110V 50W-220W
 0.6A-1.85A / 1.2A-3.7A
 5μF-15μF/20μF-55μF

XQD-005

 220V/110V 50W-220W
 0.6A-1.85A / 1.2A-3.7A
 5μF-15μF/20μF-55μF

XQD-006

 220V/110V 50W-220W
 0.6A-1.85A / 1.2A-3.7A
 5μF-15μF/20μF-55μF

XQD-007

 220V/110V 50W-220W
 0.6A-1.85A / 1.2A-3.7A
 5μF-15μF/20μF-55μF

XQD-008

 220V/110V 50W-220W
 0.6A-1.85A / 1.2A-3.7A
 5μF-15μF/20μF-55μF

XQD-009

 220V/110V 50W-220W
 0.6A-1.85A / 1.2A-3.7A
 5μF-15μF/20μF-55μF

XQD-010

 220V/110V 50W-220W
 0.6A-1.85A / 1.2A-3.7A
 5μF-15μF/20μF-55μF

XQD-011

 220V/110V 50W-220W
 0.6A-1.85A / 1.2A-3.7A
 5μF-15μF/20μF-55μF

XQD-012

 220V/110V 50W-220W
 0.6A-1.85A / 1.2A-3.7A
 5μF-15μF/20μF-55μF

Automatic Washing Machine Motor

Rated Voltage	220V,230V,240V,220~240V
Rated Frequency	50Hz 60Hz 50/60 Hz
Rated Power	50W 80W 100W 120W 135W 150W 160W 180W 220W
Rated Current	0.6 0.85 1.00 1.15 1.30 1.40 1.45 1.65 1.85
Capacitor	5Uf 7uF 8.5uF 9uF 10uF 11uF 12uF 13uF 15uF

Rated Voltage	110V,127V
Rated Frequency	50Hz 60Hz 50/60 Hz
Rated Power	50W 80W 100W 120W 135W 150W 160W 180W 220W
Rated Current	1.20 1.65 1.90 2.15 2.45 2.80 2.90 3.25 3.70
Capacitor	20Uf 28uF 32uF 35uF 40uF 42uF 45uF 48uF 55uF

Insulation grade	Class E, Class B
Number of poles	4P, 6P
Character of service	S1
Noise	<50dB
Ambient temperature	-15~40°C
Altitude	<1000m

Clutch

Digital Control Board

PT-001



Panasonic Type
Ratio:5:1
Washing Capacity(Max):5.2-6.5KG

PT-002



Panasonic Type
Ratio:5:1
Washing Capacity(Max):5.2-6.5KG

PT-003



Panasonic Type
Ratio:5:1
Washing Capacity(Max):5.2-6.5KG

PT-004



Panasonic Type
Ratio:5:1
Washing Capacity(Max):5.2-6.5KG

PT-005



Panasonic Type
Ratio:5:1
Washing Capacity(Max):5.2-6.5KG

PT-006



Panasonic Type
Ratio:5:1
Washing Capacity(Max):5.2-6.5KG

PT-007



Panasonic Type
Ratio:5:1
Washing Capacity(Max):5.2-6.5KG

SP-001



Panasonic Type
Ratio:5:1
Washing Capacity(Max):5.2-6.5KG

SP-002



Panasonic Type
Ratio:5:1
Washing Capacity(Max):5.2-6.5KG

SP-003



Panasonic Type
Ratio:5:1
Washing Capacity(Max):5.2-6.5KG

SP-004



Panasonic Type
Ratio:5:1
Washing Capacity(Max):5.2-6.5KG

SP-005



Panasonic Type
Ratio:5:1
Washing Capacity(Max):5.2-6.5KG



Digital Control Board
HF-678CM



Digital Control Board
HF-501



Digital Control Board
HF-502



Digital Control Board
HF-60-6011



Digital Control Board
HF-70-7012



Digital Control Board
HF-358

Digital Control Board



Digital Control Board
HF-368



Digital Control Board
HF-378



Digital Control Board
HF-398



Digital Control Board
HF-6318



Digital Control Board
HF-CY80BF



Digital Control Board
HF-CL168B-LED

Drain Motor

HX-XPQ6



Voltage:110-240V Frequency : 50/60Hz
Force:≥90N Hole Pitch: 68mm
Use life: 50000 Cycles

HX-XPQ6-2



Voltage:110-240V Frequency : 50/60Hz
Force:≥90N Hole Pitch: 68mm
Use life: 50000 Cycles

HX-XPQ6A



Voltage:110-240V Frequency : 50/60Hz
Force:≥90N Hole Pitch: 65mm
Use life: 50000 Cycles

HX-XPQ6-4



Voltage:110-240V Frequency : 50/60Hz
Force:≥90N Hole Pitch: 78(68)mm
Use life: 50000 Cycles

HX-XPQ6AB



Voltage:110-240V Frequency : 50/60Hz
Force:≥90N Hole Pitch: 65mm
Use life: 50000 Cycles

HX-XPQ6A-X



Voltage:110-240V Frequency : 50/60Hz
Force:≥90N Hole Pitch: 77mm
Use life: 50000 Cycles

HX-XPQ6-1



Voltage:110-240V Frequency : 50/60Hz
Force:≥90N Hole Pitch: 90mm
Use life: 50000 Cycles

HX-XPQ6C-2-010



Voltage:110-240V Frequency : 50/60Hz
Force:≥90N Hole Pitch: 73mm
Use life: 50000 Cycles

HX-XPQ6C-2-011



Voltage:110-240V Frequency : 50/60Hz
Force:≥90N Hole Pitch: 73mm
Use life: 50000 Cycles

HX-XPQ6C-2B



Voltage:110-240V Frequency : 50/60Hz
Force:≥90N Hole Pitch: 90mm
Use life: 50000 Cycles

HX-XPQ6C-2



Voltage:110-240V Frequency : 50/60Hz
Force:≥90N Hole Pitch: 77mm
Use life: 50000 Cycles

HX-XPQ6D



Voltage:110-240V Frequency : 50/60Hz
Force:≥90N Hole Pitch: 78mm
Use life: 50000 Cycles

Drain Motor

HX-XPQ6E



Voltage:110-240V
Frequency : 50/60Hz Force:≥90N
Hole Pitch: 85mm Use life: 50000 Cycles

HX-XPQ6F



Voltage:110-240V
Frequency : 50/60Hz Force:≥90N
Hole Pitch: 85mm Use life: 50000 Cycles

HX-XPQ6S



Voltage:110-240V
Frequency : 50/60Hz Force:≥90N
Hole Pitch: 77mm Use life: 50000 Cycles

HX-XPQ6S2



Voltage:110-240V Frequency : 50/60Hz
Force:≥90N Hole Pitch: 85mm
Use life: 50000 Cycles

HX-XPQA



Voltage:110-240V Frequency : 50/60Hz
Force:≥90N Hole Pitch: 60mm
Use life: 50000 Cycles

HX-PQD705



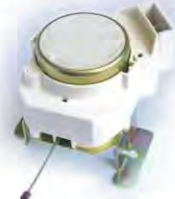
Voltage:110-240V Frequency : 50/60Hz
Force:≥90N Hole Pitch: 70mm
Use life: 50000 Cycles

HX-PQD707C



Voltage:110-240V Frequency : 50/60Hz
Force:≥90N Hole Pitch: 75mm
Use life: 50000 Cycles

HX-XQP-C



Voltage:110-240V Frequency : 50/60Hz
Force:≥90N Hole Pitch: 75mm
Use life: 50000 Cycles

HX-XPQ6C-2-011



Voltage:110-240V Frequency : 50/60Hz
Force:≥90N Hole Pitch: 73mm
Use life: 50000 Cycles

HX-XPQ6C-2B



Voltage:110-240V Frequency : 50/60Hz
Force:≥90N Hole Pitch: 90mm
Use life: 50000 Cycles

HX-XPQ6C-2



Voltage:110-240V Frequency : 50/60Hz
Force:≥90N Hole Pitch: 77mm
Use life: 50000 Cycles

HX-XPQ6D



Voltage:110-240V Frequency : 50/60Hz
Force:≥90N Hole Pitch: 78mm
Use life: 50000 Cycles

Water Valve

FCD90A



Voltage:110V/220V/240V
Water Pressure range:0.02-1 Mpa
Flow rate:3-20L/Min
Life Time:100000 Cycles

FCD180A



Voltage:110V/220V/240V
Water Pressure range:0.02-1 Mpa
Flow rate:2-7L/Min
Life Time:100000 Cycles

FCD270A



Voltage:110V/220V/240V
Water Pressure range:0.02-1 Mpa
Flow rate:3-20L/Min
Life Time:100000 Cycles

FCD270AE



Voltage:110V/220V/240V
Water Pressure range:0.02-1 Mpa
Flow rate:3-20L/Min
Life Time:100000 Cycles

FCD270AI



Voltage:110V/220V/240V
Water Pressure range:0.02-1 Mpa
Flow rate:3-20L/Min
Life Time:100000 Cycles

FCD360A



Voltage:110V/220V/240V
Water Pressure range:0.02-1 Mpa
Flow rate:3-25L/Min
Life Time:100000 Cycles

FCS360A



Voltage:110V/220V/240V
Water Pressure range:0.02-1 Mpa
Flow rate:3-20L/Min
Life Time:100000 Cycles

FCS360B



Voltage:110V/220V/240V
Water Pressure range:0.02-1 Mpa
Flow rate:0.3-3L/Min
Life Time:100000 Cycles

FCCS360E



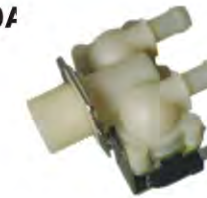
Voltage:110V/220V/240V
Water Pressure range:0.02-1 Mpa
Flow rate:2.5-15L/Min
Life Time:100000 Cycles

FPD90A



Voltage:110V/220V/240V
Water Pressure range:0.02-1 Mpa
Flow rate:3-25L/Min
Life Time:100000 Cycles

FPS180A



Voltage:110V/220V/240V
Water Pressure range:0.02-1 Mpa
Flow rate:2.3-6.5L/Min
Life Time:100000 Cycles

FPS270A



Voltage:110V/220V/240V
Water Pressure range:0.02-1 Mpa
Flow rate:3-25L/Min
Life Time:100000 Cycles

FPS180A



Voltage:110V/220V/240V
Water Pressure range:0.02-1 Mpa
Flow rate:2.3-6.5L/MinL/Min
Life Time:100000 Cycles

FCD27



Voltage:110V/220V/240V
Water Pressure range:0.02-1 Mpa
Flow rate:3-25L/Min
Life Time:100000 Cycles

FPE135



Voltage:110V/220V/240V
Water Pressure range:0.02-1 Mpa
Flow rate:3-35L/Min
Life Time:100000 Cycles

FPD180G



Voltage:110V/220V/240V
Water Pressure range:0.02-1 Mpa
Flow rate:3-35L/Min
Life Time:100000 Cycles

FP135



Voltage:110V/220V/240V
Water Pressure range:0.02-1 Mpa
Flow rate:3-35L/Min
Life Time:100000 Cycles

KD6A2



Voltage:DC12V
Water range:0-400mm
Switch:2 Life Time:50000 Cycles

KD6A3



Voltage:DC12V
Water range:0-400mm
Switch:3 Life Time:50000 Cycles

KD6A4



Voltage:DC12V
Water range:0-400mm
Switch:4 Life Time:50000 Cycles

KS1R



Voltage:250AC
Water range:0-423mm
Life Time:50000 Cycles

KS3-5Y



Voltage:250AC
Water range:0-423mm
Life Time:50000 Cycles

KS1B



Voltage:250AC
Water range:0-423mm
Life Time:50000 Cycles

KS-2



Voltage:250AC
Water range:0-423mm
Life Time:50000 Cycles

DSC-6A



Assemble Size:34±0.2 Voltage:DC5V
Screw holes:4.2±0.1 Water level:0-500mm
Durability:50000 cycles

DSC-6A2



Assemble Size:34±0.2 Voltage:DC5V
Screw holes:4.2±0.1 Water level:0-500mm
Durability:50000 cycles

SC-6A3



Assemble Size:34±0.2 Voltage:DC5V
Screw holes:4.2±0.1 Water level:0-500mm
Durability:50000 cycles

DSC-6A4



Assemble Size:34±0.2 Voltage:DC5V
Screw holes:4.5±0.1 Water level:0-500mm
Durability:50000 cycles

DSC-6B



Assemble Size:34±0.2 Voltage:DC5V
Screw holes:4.5±0.1 Water level:0-500mm
Durability:50000 cycles

DSC-6B2



Assemble Size:34±0.2 Voltage:DC5V
Screw holes:4.5±0.1 Water level:0-500mm
Durability:50000 cycles

DSC-6B3



Assemble Size:34±0.2 Voltage:DC5V
Screw holes58.7±0.3 Water level:0-500mm
Durability:50000 cycles

DSC-6B4



Assemble Size:34±0.2 Voltage:DC5V
Screw holes58.7±0.3 Water level:0-500mm
Durability:50000 cycles

DSC-6C



Assemble Size:34±0.2 Voltage:DC5V
Screw holes:57.7±0.4 Water level:0-500mm
Durability:50000 cycles

SW1



Assemble Size:34±0.2 Voltage:DC5V
Screw holes5.5±0.1 Water level:0-500mm
Durability:50000 cycles

SW1-1



Assemble Size:34±0.2 Voltage:DC5V
Screw holes4.5±0.4 Water level:0-500mm
Durability:50000 cycles

SW1-B



Assemble Size:34±0.2 Voltage:DC5V
Screw holes:4.5±0.4 Water level:0-500mm
Durability:50000 cycles

Water Level Sensor

SW2-A



Assemble Size:34±0.2 Voltage:DC5V
Screw holes:5.5±0.4 Water level:0-500mm
Durability:50000 cycles

SW3



Assemble Size:34±0.2 Voltage:DC5V
Screw holes:5.5±0.4 Water level:0-500mm
Durability:50000 cycles

SW4



Assemble Size:34±0.2 Voltage:DC5V
Screw holes:5.5±0.4 Water level:0-500mm
Durability:50000 cycles

SW5



Assemble Size:34±0.2 Voltage:DC5V
Screw holes:5.5±0.4 Water level:0-500mm
Durability:50000 cycles

SW6



Assemble Size:52±0.5 Voltage:DC5V
Screw holes:1.5±0.4 Water level:0-500mm
Durability:50000 cycles

SW7



Assemble Size:13±0.4 Voltage:DC5V
Screw holes:1.5±0.4 Water level:0-500mm
Durability:50000 cycles

SW2



Assemble Size:40±0.5 Voltage:DC5V
Screw holes:1.5±0.4 Water level:0-500mm
Durability:50000 cycles

SW8



Assemble Size:40±0.5 Voltage:DC5V
Screw holes:1.5±0.4 Water level:0-500mm
Durability:50000 cycles

SW1-B



Assemble Size:40±0.5 Voltage:DC5V
Screw holes:1.5±0.4 Water level:0-500mm
Durability:50000 cycles

SW1



Assemble Size:40±0.5 Voltage:DC5V
Screw holes:1.5±0.4 Water level:0-500mm
Durability:50000 cycles

SW1-1



Assemble Size:40±0.5 Voltage:DC5V
Screw holes:1.5±0.4 Water level:0-500mm
Durability:50000 cycles

SW1-B



Assemble Size:40±0.5 Voltage:DC5V
Screw holes:1.5±0.4 Water level:0-500mm
Durability:50000 cycles

Water Drain Pump

PSB-1



Voltage:110-220V Frequency: 50~60Hz
Power:35W Water rate:17L/Min
Noise:≤54dB

PSB-2



Voltage:110-220V Frequency: 50~60Hz
Power:35W Water rate:17L/Min
Noise:≤54dB

PSB-3



Voltage:110-220V Frequency: 50~60Hz
Power:35W Water rate:17L/Min
Noise:≤54dB

PSB-4



Voltage:110-220V Frequency: 50~60Hz
Power:35W Water rate:17L/Min
Noise:≤54dB

PSB-5



Voltage:110-220V Frequency: 50~60Hz
Power:35W Water rate:17L/Min
Noise:≤54dB

PSB-6



Voltage:110-220V Frequency: 50~60Hz
Power:35W Water rate:17L/Min
Noise:≤54dB

PSB-7



Voltage:110-220V Frequency: 50~60Hz
Power:35W Water rate:17L/Min
Noise:≤54dB

PSB-8



Voltage:110-220V Frequency: 50~60Hz
Power:35W Water rate:17L/Min
Noise:≤54dB

PX-1



Voltage:110-220V Frequency: 50~60Hz
Power:30W Water rate:20L/Min
Noise:≤55dB

PX-2



Voltage:110-220V Frequency: 50~60Hz
Power:30W Water rate:20L/Min
Noise:≤55dB

PX-3



Voltage:110-220V Frequency: 50~60Hz
Power:30W Water rate:20L/Min
Noise:≤55dB

PX-3-1



Voltage:110-220V Frequency: 50~60Hz
Power:30W Water rate:20L/Min
Noise:≤55dB

Water Drain Pump

PX-3-3



Voltage:110-220V Frequency: 50~60Hz
Power:30W Water rate:20L/Min
Noise:≤55dB

PX-3-5



Voltage:110-220V Frequency: 50~60Hz
Power:30W Water rate:20L/Min
Noise:≤55dB

PX-4



Voltage:110-240V Frequency: 50~60Hz
Power:30W Water rate:20L/Min
Noise:≤55dB

PX-6-30



Voltage:110-220V Frequency: 50~60Hz
Power:30W Water rate:20L/Min
Noise:≤55dB

PX-6-50



Voltage:110-240V Frequency: 50~60Hz
Power:30W Water rate:20L/Min
Noise:≤55dB

PX-7-1



Voltage:110-240V Frequency: 50~60Hz
Power:30W Water rate:20L/Min
Noise:≤55dB

PX-7-20A



Voltage:110-240V Frequency: 50~60Hz
Power:30W Water rate:20L/Min
Noise:≤55dB

PX-7-30A



Voltage:110-240V Frequency: 50~60Hz
Power:30W Water rate:20L/Min
Noise:≤55dB

PX-7-40A



Voltage:110-240V Frequency: 50~60Hz
Power:30W Water rate:20L/Min
Noise:≤55dB

PX-8



Voltage:110-240V Frequency: 50~60Hz
Power:30W Water rate:20L/Min
Noise:≤55dB

PX-8-1



Voltage:110-240V Frequency: 50~60Hz
Power:30W Water rate:20L/Min
Noise:≤55dB

PX-9



Voltage:110-240V Frequency: 50~60Hz
Power:30W Water rate:20L/Min
Noise:≤55dB

Safety Switch

MK5.8



MK46-4C



MK50A



MK60



MK80



MK80S



MK100



MK100-1



MK130



MK885



MK886



MK887



Door Switch

HX-446M4



Door Switch 250V~u10E3
16(4)A~Closing 1(1)A~Opening

HX-448M4



Door Switch 250V~u10E3
16(4)A~Closing 1(1)A~Opening

HX-450M4



Door Switch 250V~u10E3
16(4)A~Closing 1(1)A~Opening

HX-460M4



Door Switch 250V~u10E3
16(4)A~Closing 1(1)A~Opening

HX-3929



Door Switch 250V~u10E3
16(4)A~Closing 0(0)A~Opening

HX-5413



Door Switch 250V~u10E3
16(4)A~Closing 0(0)A~Opening

HX-5459



Door Switch 250V~u10E3
16(4)A~Closing 1(1)A~Opening

HX-5460



Door Switch 250V~u10E3
16(4)A~Closing 0(0)A~Opening

HX-5467



Door Switch 250V~u10E3
16(4)A~Closing 0(0)A~Opening

HX-M4-2



Door Switch 250V~u10E3
16(4)A~Closing 1(1)A~Opening

HX-5828H



Door Switch 250V~u10E3
16(4)A~Closing 0(0)A~Opening

HX-5462



Door Switch 250V~u10E3
16(4)A~Closing 0(0)A~Opening

Power Plug

HXD-1



Size:3*0.5 3*0.75 3*1
Length: Various

HXD-2



Size:3*0.5 3*0.75 3*1
Length: Various

HXD-3



Size:3*0.5 3*0.75 3*1
Length: Various

HXD-4



Size:3*0.5 3*0.75 3*1
Length: Various

HXD-5



Size:3*0.5 3*0.75 3*1
Length: Various

HXD-6



Size:3*0.5 3*0.75 3*1
Length: Various

HXD-7



Size:3*0.5 3*0.75 3*1
Length: Various

HXD-8



Size:3*0.5 3*0.75 3*1
Length: Various

HXD-9



Size:3*0.5 3*0.75 3*1
Length: Various

HXD-10



Size:3*0.5 3*0.75 3*1
Length: Various

HXD-11



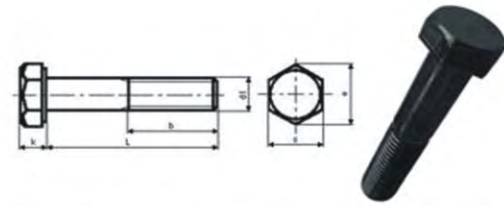
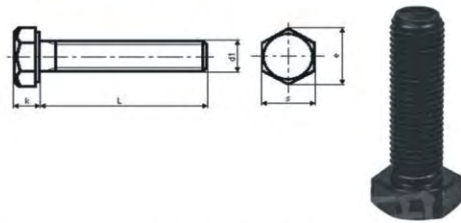
Size:3*0.5 3*0.75 3*1
Length: Various

HXD-12



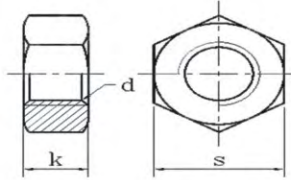
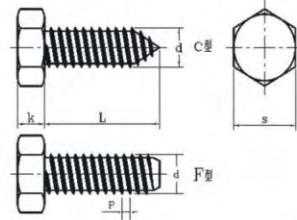
Size:3*0.5 3*0.75 3*1
Length: Various

Screws



d1	M6	M8	M10	M12	M14	M16	M20	M22	M24
P	1	1.25	1.15	1.75	2	2	2.5	2.5	3
s	10	13	17	19	22	24	30	32	36
K	4	5.3	6.4	7.5	8.8	10	12.5	14	15
L	2-200								

d1	M6	M8	M10	M12	M14	M16	M20	M22	M24
P	1	1.25	1.15	1.75	2	2	2.5	2.5	3
s	10	13	17	19	22	24	30	32	36
K	4	5.3	6.4	7.5	8.8	10	12.5	14	15
b	18	22	26	30	34	38	46	50	54
L	2-300								



单位 mm

公称直径d	ST2.2	ST2.9	ST3.5	ST3.9	ST4.2	ST4.8	ST5.5	ST6.3	ST8
螺距P	0.8	1.1	1.3	1.3	1.4	1.6	1.8	1.8	2.1
k	Max	1.42	1.62	2.42	2.42	2.92	3.12	4.15	5.95
	Min	1.18	1.38	2.18	2.18	2.68	2.88	3.85	4.65
s	Max	3.2	5	5.5	7	7	8	8	10
	Min	3.02	4.82	5.32	6.78	6.78	7.78	7.78	9.78

单位 mm

公称直径d	M1.6	M2	M2.5	M3	M4	M5
螺距P	0.35	0.4	0.45	0.5	0.7	0.8
k	Max	3.2	4	5	5.5	7
	Min	3.04	3.84	4.84	5.34	6.8
s	Max	1.5	1.8	2.2	2.6	3.44
	Min	1.1	1.4	1.8	2.2	2.96



HXBXM-01



Fan Motor Voltage:220V
Frequency:50/60Hz Current:0.06A
Power: 7W

HXBXM-02



Fan Motor Voltage:220V
Frequency:50/60Hz Current:0.08A
Power: 8.5W

HXBXM-03



Fan Motor Voltage:220V
Frequency:50/60Hz Current:0.16A
Power: 8W

HXQW-2



Fan Motor Voltage:220V
Frequency:50/60Hz Current:0.18/1A
Power: 11W

HXFZ-08



Blender Motor
Voltage:220V Frequency:50/60Hz

HXFZ-08



Fan Motor
Voltage:220V Frequency:50/60Hz

4.3" Shaded pole motor



Model	Output	Rated V	Rated A	Frequency	RatedSpeed
WPS-30-4	1/25 Hp	115 V	1.4 A	60 Hz	1550 Rpm
WPS-30-4	1/25 Hp	220 V	0.7 A	50 Hz	1380 Rpm
WPS-75-4	1/10 Hp	115 V	3.5 A	60 Hz	1550 Rpm
WPS-75-4	1/10 Hp	220 V	1.8 A	50 Hz	1380 Rpm

3.3" shaded pole motor



Model	Output	Rated V	Rated A	Frequency	RatedSpeed
EB-100	1/10 Hp	115 V	1.4 A	50 Hz	1270 Rpm
QCF125	1/60 Hp	115 V	0.7 A	60 Hz	1520 Rpm
SP-37-4	1/20 Hp	115 V	1.8 A	60 Hz	1550 Rpm
SP-50-4	1/15 Hp	230 V	1.1 A	50 Hz	1270 Rpm

HXHZ-WDJ-004



Digital Display
Size: 59.5*26mm Temp Range:-50-100
Customization Available

HXFS-1



Condenser
Size: 330*730mm Diameter:3/16
Number of wire:88
Customization Available

HXFS-2



Evaporator
Customization Available

HXHZ-WDJ-005



Digital Display
Size: 59.5*26mm Temp Range:-50-100
Customization Available

HXRSC-2



Compressor
Customization Available

HXRSC-1



Compressor
Customization Available

R134a-低背压压缩机产品性能

R134a-LBP COMPRESSOR PERFORMANCE PARAMETER

220-240V-50/60HZ

效率 Efficiency	产品 型号 Model	工作 容积 Displacement (cm ³)	蒸发温度 Evap Temp °C									启动器 Starting Device	启动 电容 Starting Capacitor	运行 电容 Starting Capacitor	冷却 方式 Cooling Type	电机 型式 Cooling Type	马力 HP	
			-35	-30	-25	-23.3	-20	-15	-10	-5	0							
OE	ADW66	6.6	制冷量 Capacity(W)	86	105	137	170	190	260	320	410	520	PTC /重锤 Current relay	/	/	ST	RSIR	1/4-
			输入功率 Input Power(W)	100	115	132	140	155	185	200	225	240						
			性能系数C.O.P	0.86	0.91	1.04	1.21	1.23	1.41	1.60	1.82	2.17						
			电流 Current(A)	1.15	1.18	1.20	1.20	1.30	1.35	1.40	1.50	1.60						
HE	ADW66	6.6	制冷量 Capacity(W)	86	105	137	170	190	260	320	410	520	PTC /重锤 Current relay	/	5uF	ST	RSCR	1/4-
			输入功率 Input Power(W)	92	101	113	120	127	150	171	190	211						
			性能系数C.O.P	0.93	1.04	1.21	1.42	1.50	1.73	1.87	2.15	2.46						
			电流 Current(A)	0.56	0.58	0.62	0.65	0.68	0.77	0.87	0.95	1.04						
OE	ADW77	7.7	制冷量 Capacity(W)	87	123	163	190	220	295	370	470	590	PTC /重锤 Current relay	/	/	ST	RSIR	1/4
			输入功率 Input Power(W)	110	130	140	152	170	195	215	235	260						
			性能系数C.O.P	0.79	0.95	1.16	1.25	1.29	1.51	1.72	2.00	2.27						
			电流 Current(A)	1.30	1.35	1.40	1.40	1.43	1.45	1.49	1.55	1.60						

HXCY-1



Thermostat Cold on/off:4.5°C/1.5°C
Warm on/off:(15°C)/(12°C)
rated current:16A S.P.S.T
Capillary:520mm

HXCY-2



Thermostat Cold on/off:4°C/1°C
Warm on/off:(15°C)/(12°C)
rated current:16A S.P.S.T
Capillary:520mm

HXCY-3



Thermostat Cold on/off:18°C/15°C
Warm on/off:(30°C)/(27°C)
rated current:16A S.P.S.T
Capillary:520mm

HXCY-4



Thermostat Cold on/off:18°C/15°C
Warm on/off:(30°C)/(27°C)
rated current:16A S.P.S.T
Capillary:520mm

HXQW-FT001



Filter Drier Various Length
Customization Available

HXQW-FT002



Filter Drier Various Length
Customization Available

HXQW-FT003



Filter Drier Various Length
Customization Available

HXQW-FT004



Filter Drier Various Length
Customization Available

HXRSLH-1



Door Hinge
Customization Available

HXRSLH-2



Door Handle
Customization Available

HXRSLH-3



Door Handle
Customization Available

HXRSLTK-1



Door Switch
Voltage:250V Current:0.5A

HXRSLTK-2



Door Switch
Voltage:250V Current:0.5A

HXRSLTK-3



Door Switch
Voltage:250V Current:0.5A

HXRSLTK-4



Door Switch
Voltage:250V Current:0.5A

HXRSE14H



Defrost Thermostat
Voltage:250V
Customization Available

HXRSDBLT-D



Defrost Timer
Voltage:250V
Customization Available

HXRSDBLT-1



Defrost Timer
Voltage:250V
Customization Available

HXRSHE



Heat Exchanger
Material: Copper
Various Length
Customization Available

HXRSLH-4



Door Hinge
Customization Available

HXRSE14C



Thermostat
Voltage:250V
Customization Available

Cold Tank



Customization Available

Hot Tank



Customization Available

HXFS-1



Lamp Holder
Voltage:250V Current:0.5A

HXFS-2



Lamp Holder
Voltage:250V Current:0.5A

HXRSLTK-1



Lamp Holder
Voltage:250V Current:0.5A

HXRSLP-1



Lamp
Voltage:250V Power: 25W
Customization Available

HXRSLP-1



Lamp
Voltage:250V Power: 25W
Customization Available

HXRSLTK-4



Water Tap
Customization Available

HXRSE14H



Water Tap
Customization Available

HXRSE14C



Water Tap
Customization Available

HXRSDBLT-1



Water Tap
Customization Available

HXRSDBLT-D



Panel
Customization Available

HXRSLP-1




Indicator Light
Voltage:250V Power: 25W
Customization Available

HXRSLP-1



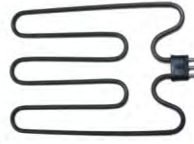
Switch
Voltage:250V Power: 25W
Customization Available

Heating Element




SY06-28
220-240V
2200W

Heating Element




SY08-31
220-240V
1500W

Heating Element




SY08-32
220-240V
2400W

Heating Element




SY08-33
220-240V
1500W

Heating Element




220-240V
850/900W
Φ6.5mm

Heating Element




220-240V
1000W
Φ8.5mm

Heating Element




220V
1200W
Φ6.5mm

Heating Element




220V
1000W
Φ8.5mm

Heating Element



220V
1500W
Φ7.5mm

Heating Element



220V
1500W
Φ8mm

Safety Valve



G1/2
16Mp

Safety Valve



G1/2
16Mp

<p>Magnesium Anode</p>  <p>Diameter:16mm-45mm Length:Various Customization Available</p>	<p>Magnesium Anode</p>  <p>Diameter:10mm-75mm Length:Various Customization Available</p>	<p>Magnesium Anode</p>  <p>Length:Various Customization Available</p>
<p>Magnesium Anode</p>  <p>Length:Various Customization Available</p>	<p>Thermometer</p>  <p>Customization Available</p>	<p>Thermometer</p>  <p>Customization Available</p>
<p>Thermometer</p>  <p>Customization Available</p>	<p>Thermometer</p>  <p>Customization Available</p>	<p>Thermometer</p>  <p>Customization Available</p>
<p>Digital Thermometer</p>  <p>Customization Available</p>	<p>Digital Thermometer</p>  <p>Customization Available</p>	<p>Digital Thermometer</p>  <p>Customization Available</p>

<p>PCB Board</p>  <p>Gas Detector Customization Available</p>	<p>PCB Board</p>  <p>Gas Detector Customization Available</p>	<p>LED & PCB Board</p>  <p>LED Light board Customization Available</p>
<p>PCB Board</p>  <p>MP3 Unit Customization Available</p>	<p>LED Lamp</p>  <p>5W / 7W / 12W Customization Available</p>	<p>LED Lamp</p>  <p>5W / 7W / 12W Customization Available</p>
<p>LED Lamp</p>  <p>5W / 7W / 25W Customization Available</p>	<p>LED Light</p>  <p>5W / 7W / 12W Customization Available</p>	<p>Infrared Sensor</p>  <p>Voltage:220-240V Detection Range: 8m Detection Angel: 360 Customization Available</p>
<p>Infrared Sensor</p>  <p>Voltage:220-240V Detection Range: 8m Detection Angel: 360 Customization Available</p>	<p>Solar Plate System</p>  <p>Customization Available</p>	

Microwave Oven Magnetron



Microwave Oven Magnetron



Microwave Oven Magnetron



Microwave Oven Magnetron



HX-1



Wires
Length:1200mm
Various Length available

HX-3



Wires
Length:1200mm
Various Length available

Glass Tray



Emergency lamp



30LED + 9LED
6V
Size: 10.5 x 8 x 39cm
Customization Available

Emergency lamp



Customization Available

Microwave Axis Sleeve



I.D. Φ 7mm, H 12mm

HXT1



Tools

HXT2

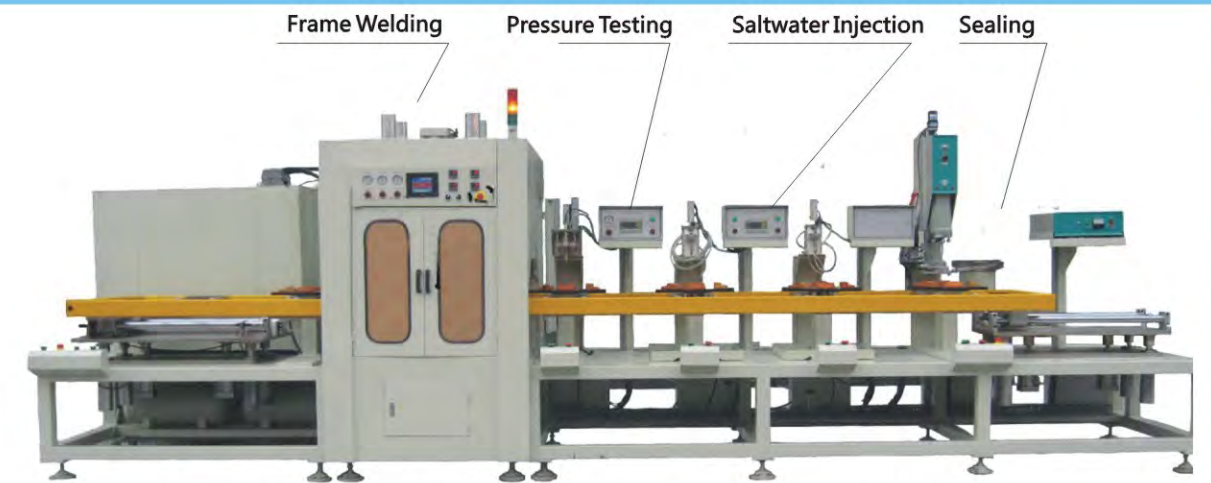


Tools



Automatic Packing Machine

Size: 1629x700x1566mm
Weight: 315Kg
Voltage: 330V, 50/60Hz
Power: 3000W
PP width: 8,9,12,13.5,15,18mm
Control: PCB
Packing Force: 5-80Kg
Packing Speed: 26/min



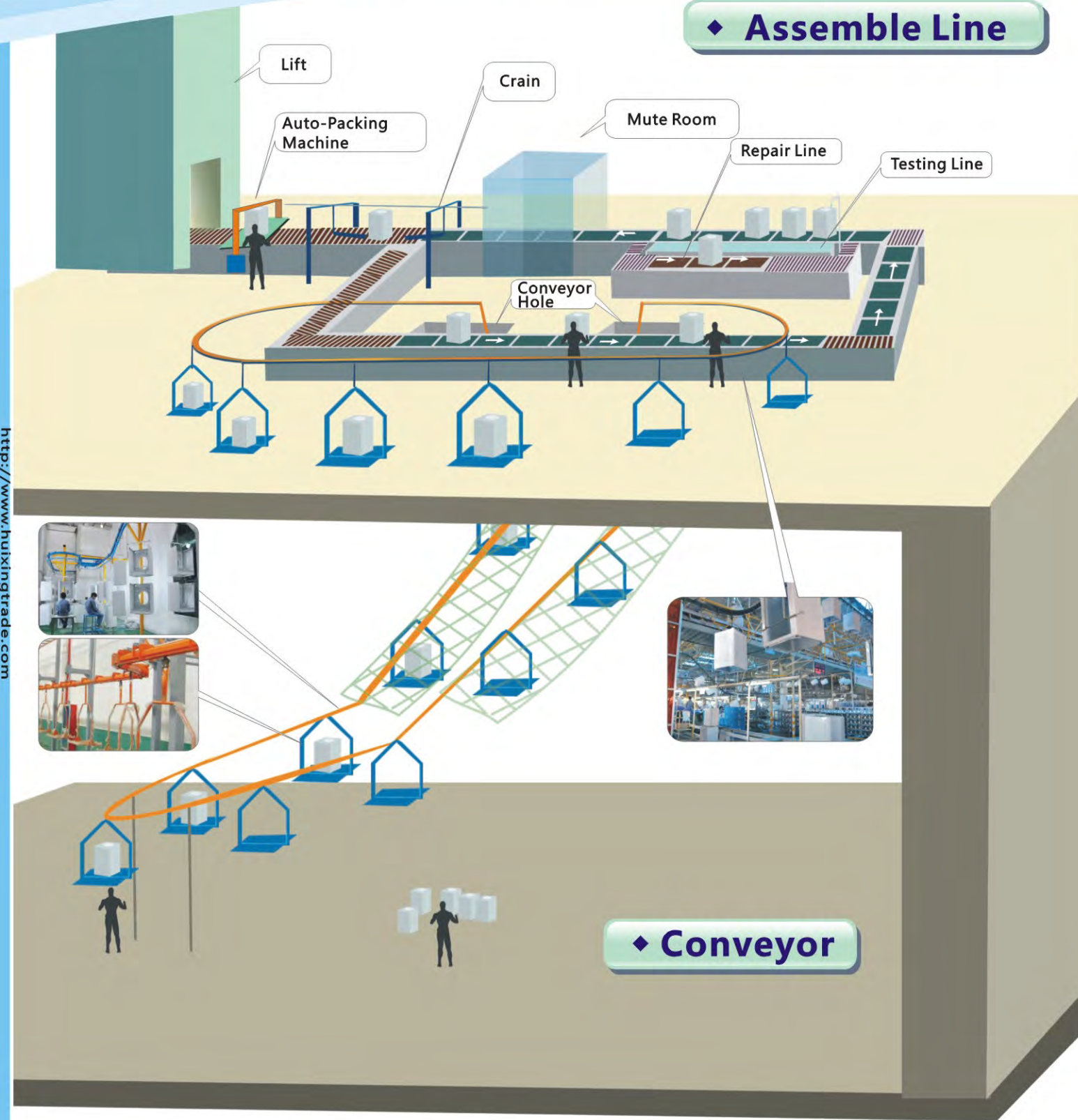
Automatic Frame Welding Machine With Pressure Testing



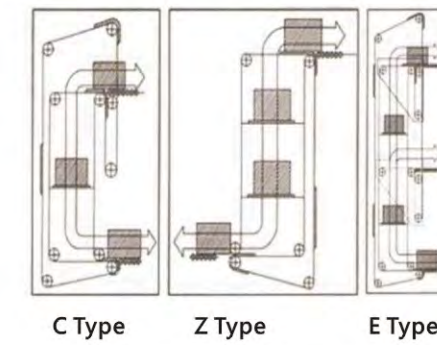
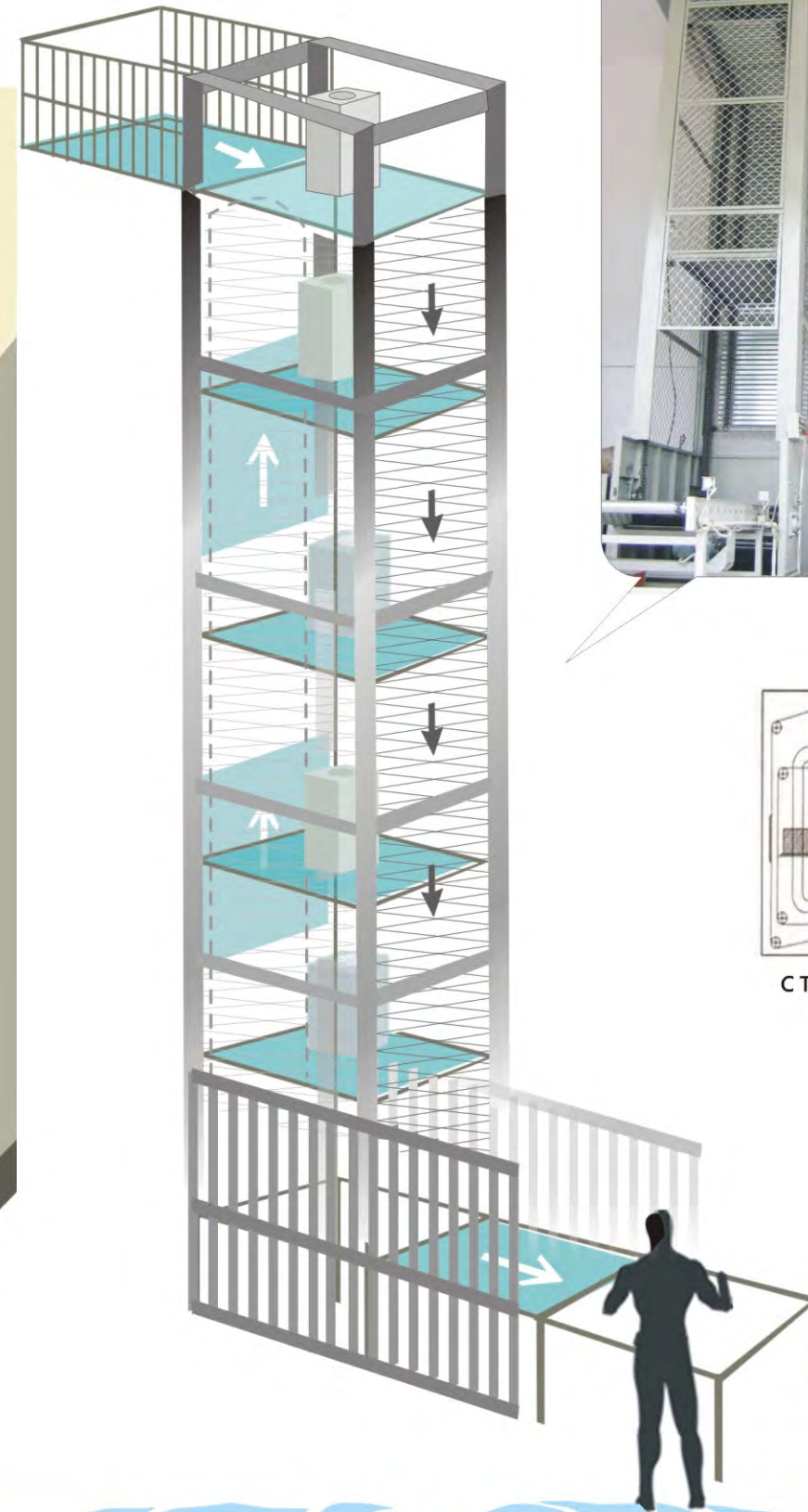
Other Equipment

We are pleasure to accept any other customer order machines or equipments to help each customer solve any production problems. It is our pleasure to help every customer by offering complete solution service.

◆ **Assemble Line**



◆ **Conveyor**

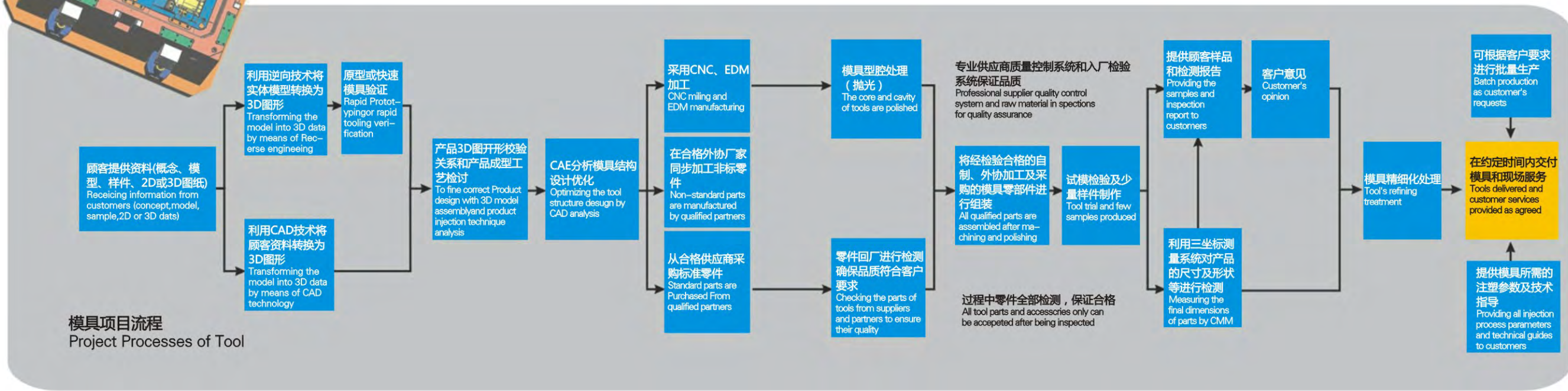


Conveyor & Production Line With Lift



http://www.huixingtrade.com

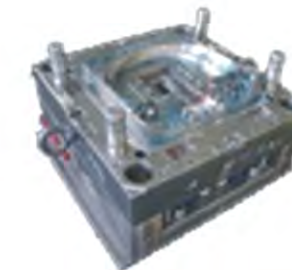
http://www.huixingtrade.com



序号 No.	设备名称 Equipment/Machine.	型号 Type	数量/台 Quantity/Sets	加工范围/台面面积 / Dimensions			加工精度 Precision
				X	Y	Z	
1	五轴高速铣 5-Axis High Speed Machine Center	OPS-850	1	880	685	520	0.005
		OPS-650	4	400	320	120	0.005
		MAKINO-A51	1	800	600	500	0.006
		FIDIA-D318	4	3000	1000	800	0.006
2	三轴高速铣 3-Axis High Speed Machine Center	MAKINO-V77	1	800	600	550	0.006
		FIDIA-D218	2	2000	1000	800	0.006
		QUICKJET-V1612	3	1600	1200	700	0.006
3	加工中心 Machine Center	VMC-1000	1	1050	560	650	0.020/0.015mm
		VMC-1500	1	1500	800	700	0.020/0.015mm
		DMC-3200	1	4000	3000	800	0.020/0.015mm
		HTM-850G	2	1500	850	700	0.020/0.015mm
		HTM-1500G	4	2000	1500	1100	0.020/0.015mm
		HTM-100H/D	1	2500	1200	600	0.020/0.015mm
		BMC2616	2	3000	2000	800	0.020/0.015mm
		BMC3122	1	3000	2200	1000	0.020/0.015mm
		HM2515	1	2500	1500	850	0.030/0.018mm
4	五轴深孔钻 5-Axis Gun Drilling Machine	CAMDER3.6	1	3000	1500	800	
		CAMDER2.6	2	2500	1500	800	
5	三轴深孔钻 3-Axis Gun Drilling Machine	DH2216	2	2500	1500	800	
6	高速火花机 High Speed EDM Machine	MAKINO	1	800	500	400	
7	CNC火花成型机 CNC EDM Machine	DM1680K-II	5	1200*2	800	500	
		DMEC-SODICK	2	320	200	250	
		BEST-560	4	600	500	500	
8	慢走丝线切割机 Low-Feeding Wire-cut Machine	FANUC 180IS-WB	5	550	370	310	
9	快走丝线切割机 High-Feeding Wire-cut Machine	DK63	5	630	800	800	
		DK50	5	500	630	800	
10	深孔钻 Gun Drilling Machine	GD-1500/NC	2	1500	1000	1500	
11	精雕机 Carving Machine	DC SERIES	14	700	800	550	
12	高精度电脑合模机 Die Spotting Machine	SX260JM-2218	1	2600	2600	1500	
		SX100JM	1	1400	1100	1300	
		SX200JM-2218	1				
		SX300JM-2218	1				
		SX500JM-2218	1				
13	横翻机90度 Upturn tool Machine	SXP-10	1	1900	1400	1800	
14	CNC车床 CNC Lathe	C6240	1	1000*350			
15	精密平面磨床 Precision Surface Grinder	M7140	2	320	1000	400	
		ESG-618	5	450	185	310	
16	摇臂钻床 Radial Drilling Machine	H5Z3050/16	6	1000	2000	1000	
		CA6050A	1	1000	2000	1000	
17	注塑机 Injection Molding Machine	EM80-V	1	350	320	320	
		HTF 200W1	1	520	520	550	
		HTF250	3				
		ENGEL 350T	1				
		HTF 470W1	1	780	780	780	
		HTF 530W1	1				
		HTF 800W1	1	980	980	980	
		HTF 1300W2	1	1220	1220	1160	
		IA 1600	1	1550	1450	1400	
		HTF 2100W2	1	1700	1650	1600	
18	三坐标测量机 Three-dimensional Measuring Machine	ML 152010	2	1500	2000	1000	
		MQ 8106	2	1000	800	600	
		ATLASB203015	1	2000	3000	1500	
		CROMA152210	1	1500	2200	1000	
19	影像测量机 Video Measurement Machine	EV-2515	1	250	150	150	
		E403010	1	300	200	200	
20	绘图仪 Graph Plotter		2				
21	螺杆式空气压缩机 Rotary Screw Air Compressor	HE-37	2				
		E-55A	1				
22	动作实验设备 Motion Experience Equipment		1				



Door Panel Tool



Low-Pressure Injection Tool

Home Appliance Tool



Precision Tool

Double Color Tool



Blow Tool